

Sichuan Highlights Tour 13 days, 2025-2026 season

Chengdu – Songpan – Jiuzhaigou – Huanglong – Dujiangyan – Leshan –
Emeishan – Luocheng – Lizhuang – Mer de Bambous – Zigong – Anyue – Dazhu

Day 1: Arrival in Chengdu Altitude: 500m.



Arrival at Chengdu International Airport, meet your guide and driver, and transfer to the city center. Chengdu is a city where, once you arrive, you never want to leave. It is the capital of Tianfu and the hub of western China. Chengdu is renowned for its history, lifestyle, cuisine, and more. It was here that the world's first paper money, called Jiaozi, was created during

the Song dynasty. On February 28, 2010, Chengdu was named "gastronomic Capital" by UNESCO. Walk in the People's Park. It is the most pleasant green space in Chengdu, with its floral displays, bodies of water and terraces draped in glycine. If you wish, you can enjoy a cup of tea while enjoying the landscapes of the lake. Strolling the wide and narrow alleys of Chengdu (Kuan Zhai Xiangzi), a very good example of heritage preservation. It was the neighborhood where the Manchu army once lived under the Qing (1644-1911).

Overnight at the charming Buddha Zen Hotel.

Day 2: Chengdu—Songpan—Jiuzhaigou (B) Altitude: 1900m.



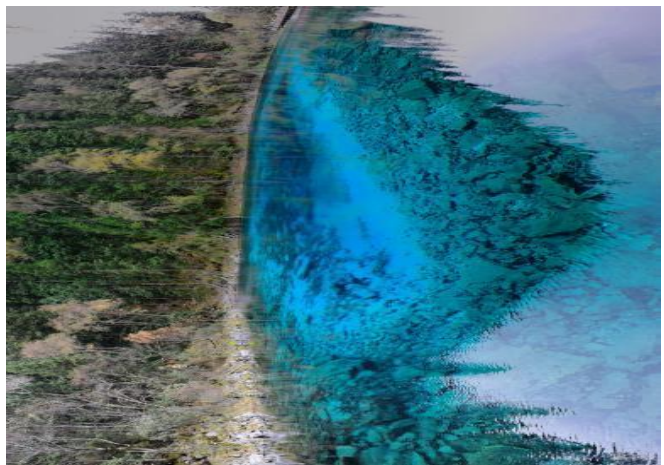
Transfer to Chengdu East Railway Station and board high-speed train C5762 (09:39–11:12) to Songpan. Upon arrival at Songpan station, meet your new driver. Take a stroll through the old town of Songpan, known as the "Gateway to Western Sichuan" and the "Ancient Plateau City." It was once a key crossroads on the Tea and Horse Road. Since the Tang and

Song dynasties, Songpan has been a crucial trading hub between Han and Tibetan regions, and an important stop for the tea-for-horses trade. The current city walls, built in 1379, stretch 6.2 km in circumference and stand 12.5 m high. Made of a mixture of glutinous rice, lime, and tung oil, they are remarkably solid, hence the historical name "Songzhou." A group of statues on the southern side of the walls commemorates the Tang-Tibet matrimonial alliance. After the Battle of Songzhou, the Tibetan King Songtsen Gampo welcomed Princess Wencheng here. Continue on to Jiuzhaigou (approx. 2h30). **Overnight at au Rezen Huating Resort Hotel**

Day 3: Jiuzhaigou (B) Altitude: 1900m.

Day trip to Jiuzhaigou National Park, listed as a UNESCO World Heritage Site in 1992 and whose name literally means "Valley of nine villages". The Jiuzhaigou site, located in the Aba Autonomous Region of northern Sichuan, is known as "the fairy tale world" and "the best water landscape". It consists of lakes, rivers, snow-capped mountains and offers beautiful passages. Discovery of Tibetan villages settled in the valleys, many hilly landscapes with colorful hills according to the seasons and different species of wild animals. Many scenic spots such as five-color Lake, Mirror Lake and Nuorilang Waterfall and Shuzheng Waterfall can be found in the three valleys Shuzheng, Rize and Zechawa, which constitute a Y: Rize's branch corresponds to the right branch of the Y, Zechawa's branch to the left branch and Shuzheng's branch to the common trunk. Back to the hotel in the late afternoon.

Overnight at au Rezen Huating Resort Hotel



Day 4: Jiuzhaigou—Huanglong—Chuanzhusi—Chengdu (B) Altitude: 500m.



Drive to Huanglong (approx. 2h). Explore Huanglong National Park, famous for its stunning karst formations. The valley's most striking feature is its calcified surface, creating thousands of pools and natural terraces that resemble a golden dragon soaring through the forest. Calcification of the land surface is the main landscape of Huanglong Valley, with thousands of water

features and calcification banks, like a golden dragon flying from the forests. The natural dams form tiered basins where glacial waters flow down the calcified steps, reminiscent of rice terraces or fish scales. The colors of the pools shift with the sediments, vegetation, and surrounding mountains, displaying shades of yellow, green, turquoise, and azure. Take the cable car up, followed by a 50-minute walk to reach the Five-Colored Lake at an altitude of 3,550 meters. The return journey takes around 2h30 on foot through a small yet magnificent valley lined with terraced limestone pools, descending to the bus station without using the cable car—an ideal way to fully admire the scenery. Transfer to Huanglong-Jiuzhai Railway Station and board high-speed train C5768 (17:59–19:52) to Chengdu. Upon arrival at Chengdu East Railway Station, meet your driver and transfer to your hotel. **Overnight at the charming Buddha Zen Hotel.**

Day 5: Chengdu—Dujiangyan (B) Altitude: 720m.



Drive to Dujiangyan (approx. 1h30). Visit the Panda Park in Dujiangyan. In 1869, French missionary Armand David discovered the giant panda in Sichuan, introducing this remarkable animal to the Western world. Visitors are charmed by both young and adult pandas as they play, chase each other, munch on bamboo shoots, or simply sleep in heartwarming postures. Next, explore the Dujiangyan Irrigation System, inscribed as a UNESCO

World Heritage Site in 2000. Before its construction, the Chengdu Plain was plagued by flooding in summer due to the Min River and drought in winter. Designed in 256 BC by Li Bing, governor of the Shu Kingdom, this ingenious system diverted the Min River's waters, transforming the Chengdu Plain into one of the most fertile regions in China for over 2,200 years. Take a leisurely stroll through the ancient town of Dujiangyan, with its charming streets and historical ambiance.

Overnight at Dujiangyan Ancient City Holiday Hotel & Resort.

Option: Volunteer day at the Panda Park in Dujiangyan. (Price: 840 RMB per person). Participation age: between 8 and 70 years old.

Day 6: Dujiangyan—Leshan—Emeishan (B) Altitude: 550m.



Drive to Leshan (approx. 2h30). Listed as a UNESCO World Heritage Site in 1996, the Giant Buddha of Leshan overlooks the confluence of the Min, Dadu, and Qingyi Rivers, once notorious for their deadly whirlpools. The monk Haitong, who initiated the carving in 713, hoped the statue would calm the turbulent waters. As the first and largest stone Buddha in the world, it stands 71 meters tall. Enjoy a cruise on the Min River to admire panoramic views of the Giant Buddha and the surrounding landscapes. Then, climb up to the Buddha's head and visit Lingyun Temple and the Giant Buddha site. Continue by car to Emeishan (approx. 1h). Mount Emei, one of the four

sacred Buddhist mountains in China, has long been a major pilgrimage site, as evidenced by the numerous temples and monasteries that dot its slopes. Its Golden Summit, at 3,077 meters, is often shrouded in mist. The Bodhisattva Samantabhadra (Puxian) is considered the protector of Mount Emei. Visit Fuhu Temple (Temple of the Reclining Tiger), a nunnery located at 630 meters above sea level. It houses 500 clay arhats, each with strikingly different expressions and postures. Inside stands a 7-meter-high bronze pagoda adorned with 4,700 Buddha images and inscribed with the Huayan Sutra. **Overnight at Holiday Inn Express Emei Mountain.**

Day 7: Emeishan (B) Altitude: 550m.



Take a shuttle bus to Wanniansi Station (approx. 40 minutes). Visit Wannian Temple, reached by cable car at an altitude of 1,100 meters. Originally built in the 4th century, the temple has been destroyed by fire several times throughout history. Inside a

hall designed in an Indian architectural style stands a bronze statue of the Bodhisattva Samantabhadra (Puxian), created in 980, embodying the mountain's protector. Descend on foot along the mountain path (approx. 2.5 hours), passing numerous sanctuaries along the way. Visit Baoguo Temple, built in 1573 during the Ming dynasty and later rebuilt under the Qing dynasty. Its main halls are set against the mountainside, blending harmoniously into the natural surroundings. **Overnight at Holiday Inn Express Emei Mountain.**

Day 8: Emeishan—Luocheng—Lizhuang—Bamboo Sea Shunan (B) Altitude: 311m.



Drive to Luocheng (approx. 1h30) and visit the ancient town, uniquely shaped like a boat, with streets lined by wooden-columned houses in Ming and Qing architectural style. Elderly villagers often spend their leisure time in the traditional teahouses. Enjoy a tea tasting with the locals for

an authentic cultural experience. Continue by road to Lizhuang (approx. 2h). Arrive in the afternoon at this historic riverside village on the Yangtze. During the Anti-Japanese War, Lizhuang became the relocated campus of Tongji University, adding a unique chapter to its history. Explore the old streets and traditional atmosphere before continuing on to the Bamboo Sea (approx. 1H). The Bamboo Sea, a national park in Sichuan, spans 28 mountains with more than a thousand peaks, covering an area of 4,000 hectares. Famous for its rich variety of over 30 species of bamboo, it rose to worldwide fame as a filming location for Crouching Tiger, Hidden Dragon. The park offers breathtaking scenery of mountains, caves, lakes, and waterfalls, along with cultural sites nestled in nature. **Overnight at Chanyi Guiyunju Hotel.**

Day 9: Bamboo sea Shunan—Zigong (B) Altitude: 400m.

Depart in the morning for the Bamboo Sea. Upon arrival, visit the Bamboo Culture Museum to learn about the history and uses of bamboo. Then enjoy a panoramic cable car ride over the vast bamboo forest. Explore the Xianyu Caves, where Buddhist and Taoist statues are carved into the rock, before visiting the Seven-Color Waterfalls and other scenic sites. Continue on to Zigong (approx. 2h). The history of Zigong is closely tied to the salt industry, with more than 1,900 years of salt production. As early as the Eastern Han dynasty (25–220), people began drilling wells to extract salt. By the Western Jin dynasty (265–316), the city had already earned a reputation as the “Salt Capital.” In 1835, Zigong boasted the world’s first salt well to surpass 1,000 meters in depth, marking the peak of local salt-making. The city was also the first in the world to harness and use natural gas. **Overnight at Howard Johnson Guotou Plaza.**



Day 10: Zigong—Anyue (B) Altitude: 325m.



Visit the Zigong Salt History Museum, originally built in 1736 by the Shanxi Merchants’ Guild. Then explore the old village of Xianshi, known for its traditional buildings and guild halls representing different provinces. Xianshi once served as the main port for transporting salt. Continue by road to Anyue (approx. 1h30), driving through the Chinese countryside, rich with rice paddies and terraced fields. Visit the Yuanjue Cave, whose exquisite carvings began during the Tang dynasty and continued through the Five Dynasties and Song periods. **Overnight at Anyue Jinjiang Hotel.**

Day 11: Anyue—Dazu (B) Altitude: 370m

Depart for the Reclining Buddha of Anyue (approx. 40 minutes) via a newly opened road. The sanctuary, dating from the 9th–11th centuries, is carved along an 850-meter-long cliff face standing 5 meters high. The site features a 23-meter-long reclining Buddha surrounded by numerous intricate bas-reliefs. On the way to Dazu, visit another Buddhist sanctuary complex: Pilu Cave, home to a finely sculpted statue of Guanyin adorned with black bamboo. Continue to Dazu to explore the UNESCO-listed Buddhist rock caves, as renowned as those in Dunhuang or Longmen. Thousands of bas-reliefs and statues, influenced by Buddhist, Taoist, and Confucian traditions, are spread across roughly forty sites. The earliest works date from the Tang dynasty (9th century) and the latest from the late Song dynasty (12th century). Visit the Bei Shan rock sculpture site, an older and more fragile site from the 9th century, now protected under a shelter. It features more modestly sized carvings with Taoist and Confucian themes, including over 10,000 statues spread across 190 caves over a distance of 500 meters, created over a span of 250 years.

Overnight at Ramada Hotel.



Day 12: Dazu—Chengdu (B) Altitude: 500m.

Depart for Baodingshan (approx. 30 minutes) and visit the Baodingshan rock sculpture site. Nestled along a U-shaped gorge, the site features two groups of carvings, regarded as the pinnacle of Chinese rock sculpture. Among them, the Avalokitesvara with 1,000 arms (actually 1,007) is truly remarkable. It was entirely created under the lifetime of a single man, Zhao Zhifeng, who spent over seventy years (1179–1249) raising funds to carve these statues. No other known rock ensemble of such scale was completed in such a short time, making this the last site of its kind to be created in China. Continue by road to Longchang (approx. 1h30) to discover the stone archways erected by devoted wives in memory of their deceased husbands. Return to Chengdu (approx. 3H). **Overnight at Buddha Zen Boutique Hotel.**

Day 13: Departure from Chengdu

Transfer to Chengdu International Airport (without guide) for your return flight (flight details to be confirmed). End of our services. We wish you a pleasant journey home, carrying with you many wonderful memories!

Our selection of hotels for your tour in Sichuan:

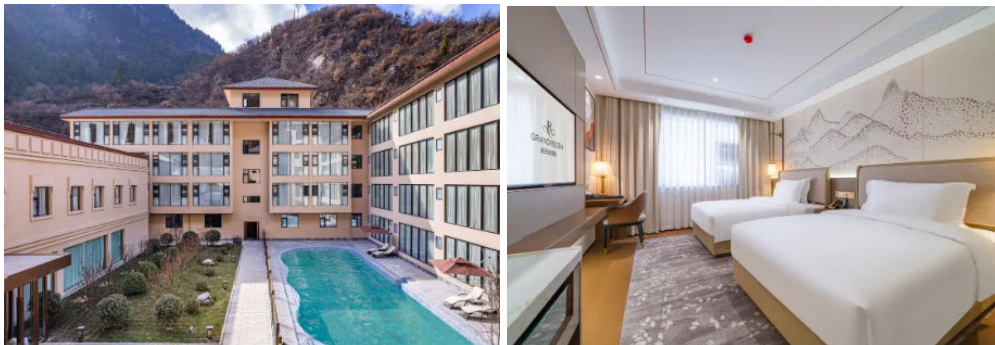
Chengdu : Buddha Zen Hotel.

Discover an oasis of serenity in the heart of Chengdu at the Yuanheyuan Buddha Zen Hotel. Inspired by Buddhist philosophy, this hotel combines minimalist elegance with a meditative atmosphere. Clean-lined rooms, Zen gardens, and traditional tea spaces create a unique relaxation experience. Perfect for travelers seeking spirituality and tranquility, while staying close to urban attractions.



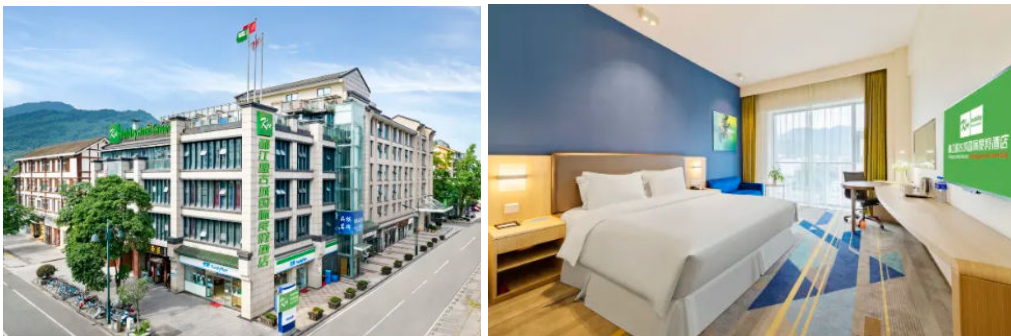
Jiuzhaigou: Rezen Huating Resort Hotel

A 5-star property at the gates of Jiuzhaigou National Park, the Grand Rezen blends discreet luxury with harmony in nature. Its villas and suites, crafted from fine wood, offer breathtaking mountain views, while the pool provides ultimate relaxation. An exceptional address for discerning explorers.



Dujiangyan: Ancient City Holiday Inn Hotel & Resort.

Just steps from the UNESCO site of Dujiangyan, this 4-star resort offers 154 modern rooms, free Wi-Fi, an international restaurant, meeting rooms, parking, and shuttle service to the station. Perfect for business or leisure, it combines contemporary comfort with the charm of the ancient city.



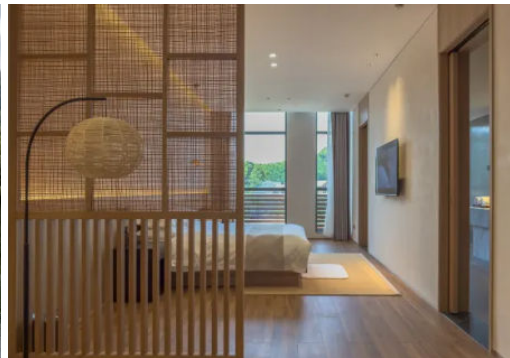
Emeishan: Holiday Inn Express Emei Mountain

At the entrance of Mount Emei National Park, this 4-star Holiday Inn Express features 200 modern rooms, buffet breakfast, high-speed Wi-Fi, business center, laundry service, and free parking. Ideal for sacred hikes or nature escapes, it offers comfort, efficiency, and panoramic mountain views.



Shunan: Chanyi Guiyunju Hotel

In the heart of Shunan Bamboo Sea, the luxurious Chanyi Guiyunju Hotel overlooks Yingfeng Bay from 100 meters high. Its 45 designer suites and rooms, all with bamboo-view balconies, offer smart air-conditioning, Wi-Fi, and bathtubs. Outdoor pool, local restaurant, tea lounge, laundry service, free parking, and shuttles. Perfect for a family Zen retreat.



Zigong: Howard Johnson Guotou Plaza

Opened in 2025, this 5-star palace sets a new standard in Zigong: 95 rooms and suites from 42 to 100 m², fiber Wi-Fi, smart air-conditioning, minibar, and garden-view balconies. Located 5 minutes from the high-speed rail station, it offers grand lobbies, 3 restaurants, high-tech meeting rooms, 24-hour gym, and free parking. An oriental luxury haven in the city center.



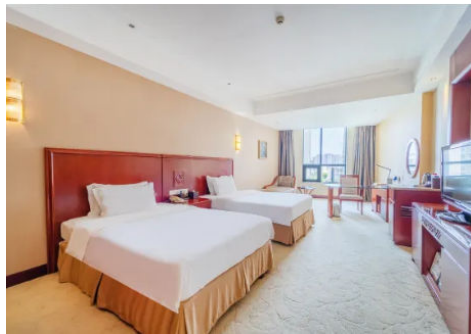
Anyue: Jinjiang Hotel

Opened in 2025, this premium 4-star Jinjiang property is just 120 meters from the Anyue Digital Grottoes Exhibition Center. Its 120 ultra-connected rooms, with balcony or large bay windows, feature fiber Wi-Fi, smart air-conditioning, and minibar. Buffet 68 ¥, café, high-tech meeting rooms, gym, free parking, and airport shuttle. Accessible luxury steps from millennial sites.



Dazu: Ramada Hotel

Only 3 km from the famous Dazu rock carvings, this superior 4-star hotel has 206 spacious rooms with fiber Wi-Fi, air-conditioning, minibar, and bathtubs. Full buffet, local restaurant, gym, high-tech meeting rooms, free parking, and 24-hour reception. Ideal for business or heritage exploration, with shuttles to Dazu South high-speed rail station (33 km).





Our double location in China and France ensures you control of your trip from A to Z, without intermediary and therefore at the best possible cost! We offer you the strong field knowledge and responsiveness of our local agency, as well as the guarantees and ease of payment offered by our French agency, allowing you to travel in peace!

Our field presence in China

- Incoming local agency located in Kunming, China, since 2007
- 1 unique interlocutor during all phases of travel creation, until your return from China
- Direct booking of all our services across China
- Relationships of trust and respect with our various partners throughout China
- Search for continuous improvement and the creation of itineraries that are ever more surprising and authentic
- Availability and responsiveness on site, reachable number 24/7
- Experienced English-speaking local guides selected for their skills
- 11 expert advisors, regularly traveling in search of destinations that are still authentic
- Knowledge of the "field" allowing us to offer you adapted, exclusive and original circuits

Our agency in China

China Roads 1326 South Ring Road, Kunming, Yunnan, China. License: L-YN-00070

Phone: (0086) 159-49379-177

Website: www.China-Roads.fr & www.Yunnan-Roads.fr & www.Tibet-Roads.fr

The guarantees and advantages of our agency in France

- Payment of your trip to France by simple transfer or credit card (Visa, Mastercard and AMEX) via our secure site, avoiding expensive bank transfer fees to China or the usual charges of 4-5% of the price of the trip for a credit card payment in China
- Registration of our agency with Atout France guaranteeing our professionalism
- HISCOX Professional liability insurance
- IATA certification allowing you to benefit from the management of your international flights at negotiated rates
- Financial guarantee subscribed to the APST guaranteeing you a full refund of the sums already paid in case of failures on our part, otherwise the support of your trip under the same conditions as established with our agency

Our agencies in France (Dinan, Nice, Marseille)

VOYAGEOS, 19 rue Chateaubriand 22100 Dinan FRANCE

Telephones: +33 (0)9-83-07-44-60 or +33 (0)6-40-27-64-22 / weekdays 9-12h and 14-19h.

VOYAGEOS, 06310 Beaulieu-sur-Mer FRANCE (by appointment only)

Phone: +33(0) 7-87-67-02-27 / weekdays of 9-17h.

VOYAGEOS, Marseille FRANCE (by appointment only)

Phone: +33(0) 7-77-45-18-50 / weekdays of 9-17h.

Associative engagement

€2 per traveler donated to 2 charities:

- Colors of China: Sponsorship for the schooling of girls in northern Guangxi
- Children of the Mekong: Schooling of children in Upper Yunnan

+ **planting a tree per traveler** with the Yves Rocher Foundation "Plantons pour la Planète"

"Homemade" tours - authentic traveler feedbacks

Our circuits, and more generally all the content we create and publish, are the result of extensive research and experience of more than 15 years. But they are regularly - not to say constantly - copied. Don't be surprised, but just recognize the copy of the original!

We do not post fake traveler reviews as this has unfortunately become common on the Internet. All comments on the forums and our sites are guaranteed authentic! Several testimonials from alumni of our travelers here: [Travel comments from China](http://Travel%20comments%20from%20China)

RATE - based on 2/ 4 or 6 travelers in 1-2-3 double/twin rooms - Inclusions and Exclusions:

Sichuan Highlights Tour – 13 Days, 2025–2026 Season

- 22,700 RMB (approx. €2,838) per person, based on 2 travelers
- 15,500 RMB (approx. €1,938) per person, based on 4 travelers
- 13,300 RMB (approx. €1,663) per person, based on 6 travelers

Applied exchange rate : €1 = ~RMB8

- Deposit on reservation of 50% of travel expenses, by transfer or credit card
- Balance 3 weeks before departure, again by bank transfer or credit card

This rate includes:

- Accommodation in the mentioned hotels with breakfast
- All transfers by private vehicle as mentioned in the program
- Entrance fees and activity costs as per the program
- English-speaking guide from Day 1 to Day 12
- Round-trip high-speed train between Chengdu and Jiuzhaigou in second-class seats
- 24/7 assistance from our agency in Kunming, insurance and guarantees from our French agency

This rate does not include:

- Personal expenses and activities not explicitly mentioned in the program
- Meals and drinks unless otherwise specified
- Tips for drivers and guides
- Personal travel insurance and Chinese visa fees
- International and domestic flights (we can include them in the final quotation if desired)

Program subject to slight change due to schedule changes or cancelation of airlines, availability of guides and hotels or bad weather.



In China : Yunnan Roads, 219 Chuncheng Road, Kunming, Yunnan, China

In France : Voyages, 19 rue Chateaubriand 22100 Dinan

