

Your Adventure in China with

Traditions, craftsmanships and Winery in Northern Yunnan

2025 - 2026 season

Kunming - Weishan - Dali - Xizhou - Niujie - Shaxi - Tacheng - Cizhong -
Meili - Benzilan - Ringha Valley - Shangri La - Lijiang - Shuhe -

Day 1: Arrival in Kunming ~ 1h transfer. Altitude: 1800m.

Arrival in Kunming during the day (flight reference to be precised). Welcome by your English-speaking driver-guide, followed by transfer to your conveniently located accommodation, set away from downtown Kunming near the Golden Temple and the Botanical Garden. You can relax in the hotel's hot springs to recover from your international flight. In the evening, attend the beautiful song and dance performance of Yunnan's ethnic minorities entitled "Dynamic Yunnan" (8:00–9:30 pm). Dinner at your expense.

Overnight at Qianxun Mowen Homestay.



Day 2: Kunming – Weibaoshan - Weishan (B) ~ 3h30 drive

Transfer to Kunming Station to take the C4302 train to Dali, departure at 08:30 and arrival at 11:05 (Business class seats). Meet your English-speaking driver-guide and discover this morning the Weibaoshan mountain, located at 2500m altitude. Part of one of the 13 sacred Taoist mountains of China, the site is quiet, exudes a certain serenity, and it is good to walk there to discover its small temples where Taoist monks reside. Transfer to your hotel, well located in Weishan. Still preserved from tourism, this city hosts a population quite charming, and smiling, for a very pleasant free walk in its small alleys. Dinner at your expense and **overnight at Dawn of Yihe Hotel.**



Your Adventure in China with

Day 3: Weishan – Dali – Tea picking (B) ~ 2h drive. Altitude: 1900m.

After breakfast, drive to the Dali region. On the way, stop at the Hui village (Muslim minority) of Donglianhua and visit the small museum and mosque. Continue on to Dali's Old Town, where you may choose a restaurant for lunch (at your own expense). In the afternoon, visit Wuweisi Temple, located next to a tea field where you can pick leaves and prepare them yourself to take home. Then settle in at Taoxi Manor Hotel, conveniently located near the Three Pagodas and the North Gate of Dali's Old Town. Dinner at your expense. **Overnight at Taoxi Manor**



Day 4: Dali – Xizhou - Niujie (B) ~ 2h drive. Altitude: 1900m.

This morning, transfer to the small village of Xizhou, where you can visit the morning market and then rent bicycles or electric scooters for a ride along the lakeshore, recently redeveloped into an ecological corridor. Afterwards, transfer to a large Bai residence in a nearby village to experience Batik fabric making and the traditional "three teas" ceremony of the Bai people. Continue in the afternoon to the village of Niujie, located in Eryuan County, well known for its hot springs. Check in at Yanqige Inn and enjoy the rest of the evening relaxing in the hotel's communal hot springs or in a private hot spring directly in your room. **Overnight at Yanqige Inn**



Your Adventure in China with

Day 5: Niujie - Shaxi (B) ~ 2h30 drive. Altitude: 2050m.

Meeting at 9h with your driver for transfer by private vehicle to the great valley of Shaxi. Discovery of the old town of Shaxi, once one of the major hubs of trade. Continue on to the Shibaoshan site, a beautiful complex of Buddhist rock carvings and serene temples. Accommodation at the Linden Center Shaxi, recently opened by the renowned Brian Linden within the Shibaoshan site itself. The hotel has a good restaurant. **Overnight at Linden Center Shaxi.**



Day 6: Shaxi –Jianchuan – Shigu - Tacheng (B) ~ 4h drive. Altitude: 3200m.



Meeting at 9h with your driver for transfer by private vehicle to the Tibetan region of Tacheng. First stop this morning in Jianchuan, where you can discover traditional local crafts such as wood carving and take part in a workshop to create a beautiful wooden tray and print a few traditional patterns on natural paper to bring home as a souvenir. Next,

stop at the village of Shigu (site of the First Bend of the Yangtze) before continuing along the Yangtze through small villages. Arrival in Tacheng in the afternoon and check-in at Tacheng Songtsam Lodge. The rest of the evening is free to explore the surroundings at your own pace. **Dinner at your expense and overnight at the Tacheng Songtsam Lodge**



Day 7: Tacheng - Cizhong (B). 3h30 drive. Altitude: 2200m.

Departure from your hotel at 8:00 am to go to the Baima Nature Reserve, to observe the golden monkey of Yunnan, a protected species, in its natural environment. Drive towards Cizhong, possible visit along the way to Naxi minority villages, as well as the village near the hotel, beautifully surrounded by vineyards, which also produces very good traditional honey! After lunch, drive to the amazing village of Cizhong, populated by Catholic Tibetans. Visit the Xiaoling winery if you wish (tasting at your own expense, with the option to purchase one or more bottles on site). **Dinner at your expense and overnight at the Cizhong Songtsam Lodge.**



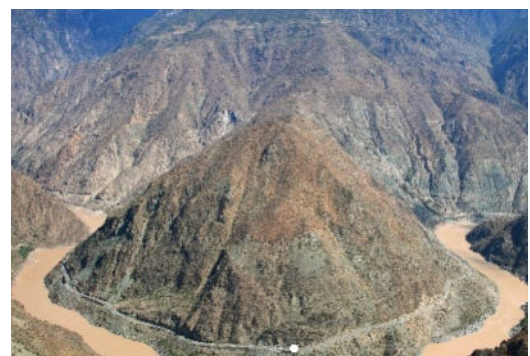
Day 8: Cizhong - Meili (B). Altitude: 3300m.

This morning, head towards Meili Mountain. Road towards Mingyong village. Discover the Mingyong Glacier by taking a local shuttle to reach the site, with the opportunity to visit the Lotus Temple along the way. Continuation to Feilaisi village. Accommodation at the superb Songtsam Meili Lodge offering a magnificent view of the Meili mountain range. Dinner included on site. **Overnight at Songtsam Meili Lodge.**



Day 9: Meili - Benzilan (B). 3h drive. Altitude: 2300m.

Superb sunrise over the Meili Mountains. Road to Benzilan. On the way, very nice view on a curve of the Yangtze. Visit the Tibetan monastery of Dongzhulin, located in line with the Yangtze. It is a popular place for locals, known for hosting several "living Buddhas". Discover a small local nunnery not very far from there. A short hike will be arranged according to your fitness level for the day. Visit a French resident in Benzilan and enjoy a wine tasting (purchase of a bottle required, at your own expense). Meals at your expense, **overnight at Linden Center Benzilan.**



Day 10: Benzilan – Shangrila - Ringha Valley (B, D). 3h drive. Altitude: 2300m.

Departure this morning towards Shangri-La. Stop at Nixi village, renowned for its pottery artisans, where the region's black clay is famous for its unique qualities. Try your hand at crafting a black clay cup to take home as a souvenir. Continue on to the Ringha Valley, arriving at Liotard Farm around 2:00 p.m., where a walk will begin through the surrounding hills, rivers, forests, and villages. Visit the Dabose Temple, while also discovering local architecture, agricultural life, and Tibetan traditions. In the late afternoon, arrive at the campsite, located next to the farm in the Ringha Valley at 3,350 m altitude. Meet the Liotard team and tour the camp, where tea and snacks will be served. Visit Liotard Farm (a traditional Tibetan house adjacent to the camp) and enjoy activities for children. Sunset aperitif, followed by dinner in the Liotard Farm dining room. Dinner included on site. **Overnight at Liotard Farm Camp (Luxury Tent)**



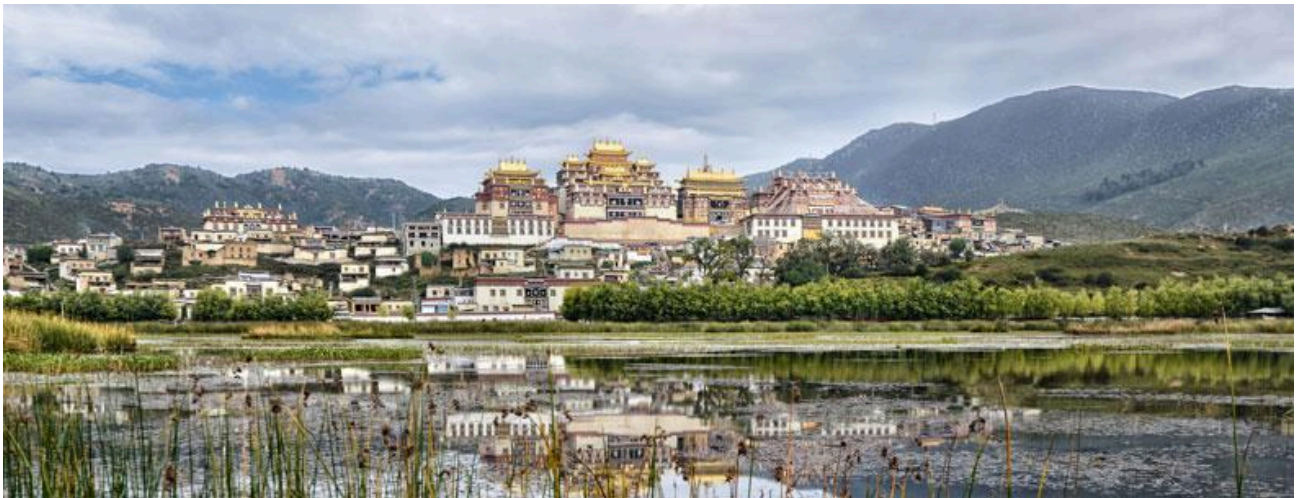
Day 11: Hike and Fancy Pic-nic (B, L, D 4h hike, altitude : 3650m.

This morning, depart accompanied by two mules: one for carrying equipment and one you can ride. Hike or ride to a meadow at 3,650 m where a picnic will be served, then descend back to Liotard Farm via a different path. Arrival in the late afternoon. Chinese dinner served at the farm. **Overnight at Liotard Farm Camp (Luxury Tent)**



Day 12: Ringha Valley - Shangri La (B)

After breakfast, depart the farm for a full day exploring Shangri-La and its surroundings, starting with the magnificent Tibetan monastery of Songzanlin. Stroll through the old town, including a visit to Bai Ji Si Temple, which offers beautiful views of Shangri-La and the Shika Mountains. Note that the central part of the Old Town was ravaged by fire on January 11, 2014, it is already nearly fully rebuilt. Lunch at your expense. Try Yak butter tea, Tsampa and Yak butter cheese, local specialties and bases of their daily food. In the afternoon, take part in a Thangka painting workshop. If you would like to, you can attend and participate to spontaneous dances on the evening of the locals in the Old Town Square. Dinner at your expense. **Overnight at Lux Tea Horse Road Shangrila.**



Day 13: Shangri La - Lijiang - Shuhe (B) ~ 4h drive. Altitude: 2400m.

Meet at 9am with your driver for transfer by private vehicle to Lijiang. Midway, stop at the Tiger Leaping Gorge. Arrive in Lijiang for lunch, then check in at the comfortable Lux Tea Horse Road Lijiang Hotel, located in the Old Town, which you can explore on foot throughout the afternoon, including a visit to the Black Dragon Pool Park. **Overnight at Lux Tea Horse Road.**



Day 14: Naxi Traditional house experience - Lashihai (B)

After breakfast, drive to the small village of Lunagu, still untouched by mass tourism, where you can experience the authentic Dongba culture in a recently renovated traditional house. Then visit Zhiyun Temple and take a stroll along the shores of Lashihai Lake. *(Other activities can be arranged according to your preferences: hike to the "Milk Lake" from Yuhu Village / via ferrata followed by a visit to Yuhu Village / half-day horse ride / full-day regional exploration by motorcycle / helicopter flight / meditation experience / golf, etc.)* Meals are at your own expense.

Check in at the end of the day and overnight stay at Lux Tea Horse Road Lashihai.



Day 15: Departure from Lijiang –(B) ~ 1h drive

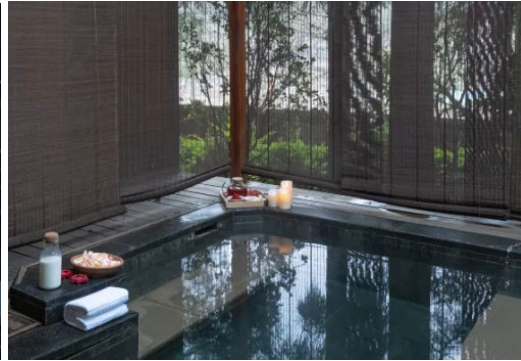
Morning at leisure to stroll along the lake shores before transfer to Lijiang Airport for your flight to the next destination (flight details to be confirmed). End of our services, we wish you a pleasant return home, beautiful memories in mind!

Your Adventure in China with

Our selection of hotels for your tour in Sichuan and Yunnan:

Kunming : Qianxun Mowen Homestay

A discreet haven in the heart of Kunming, Qianxun Mowen Homestay blends elegance with simplicity. Its light-filled rooms invite rest, while intimate gardens evoke the gentle charm of Yunnan. Here, guests recharge like in an artist's home, immersed in authenticity, serenity, and a poetic travel atmosphere.



Weishan: The Dawn of Yihe Hotel

Ideally located in the heart of Weishan Old Town, this recently opened hotel is the only upscale address in Weishan, featuring a spa and a restaurant serving both Chinese and Western cuisine—everything is in place for a relaxing stay in an elegant setting.



Dali: Taoxi Manor Hotel

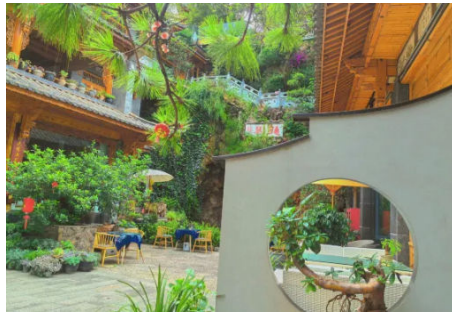
Set within a meticulously restored courtyard, the hotel showcases noble wooden beams, elegant stone accents, and serene gardens. Its rooms and suites blend traditional charm with modern comfort, offering a peaceful retreat just steps from the lively Fuxing Street. With its intimate atmosphere and attentive service, Taoxi Manor provides travelers seeking heritage and convenience in Yunnan with an authentic yet refined experience.



Your Adventure in China with

Niujie : Yanqige Inn

Nestled in the old street of Niujie, Yanqige Inn welcomes guests in a well-preserved traditional house. This authentically charming inn combines historic wooden architecture with simple comforts, featuring rooms overlooking ancient rooftops. Perfect for travelers seeking cultural immersion, it is within walking distance of the iconic blooming canola landscapes.



Shaxi : Linden Center Shaxi

Housed in a restored 18th-century caravanserai, Linden Center Shaxi offers an authentic immersion into the history of the Tea and Horse Road. This boutique hotel blends Bai heritage preservation with contemporary comfort, featuring elegant rooms opening onto traditional courtyards. A unique cultural experience including artisan workshops and meditation near the historic village.



Tacheng : Tacheng Songtsam Lodge 5* (boutique hotel)

Wonderful little complement hotel lost in the depths of Yunnan. What a joy to see such comfort, service and food in this remote and enchanting setting! Superb views from the hotel balconies over the terraced fields.



Cizhong : Cizhong Songtsam Lodge 5* (boutique hotel)

Opened in October 2013, it follows the standard of rooms and service of the other hotels of the group in North Yunnan. Location slightly set back from the adorable village of Cizhong, located in line with the Mekong River.



Your Adventure in China with

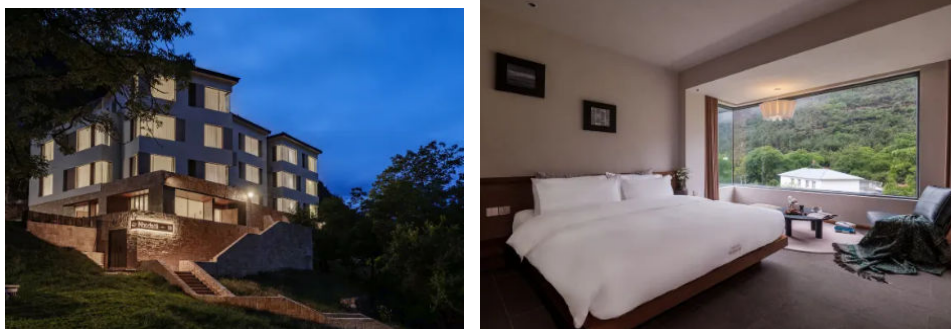
Meili Mountain : Meili Songtsam Lodge 5* (boutique hotel)

Absolutely magical views of the Meili Mountains from the bar, restaurant, and of course your room for a memorable sunrise over the mountains. Breakfast and coffee break daily at the hotel bar, dinner is included on site at the hotel restaurant.



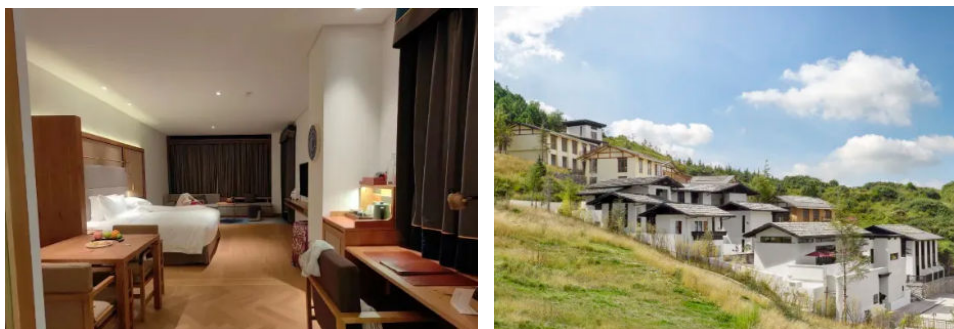
Benzilan: Linden Center Benzilan

Housed in a historic caravanserai along the Tea Horse Road, Linden Center Benzilan offers an authentic immersion into Tibetan culture. This boutique hotel combines architectural preservation (carved wood, stone walls) with modern comfort, featuring rooms with views of the sacred mountains and the Lancang River.



Shangri La : Lux Tea Horse Roads

Nestled in the heart of Shangri-La Old Town, this property embodies the spirit of the ancient Tea Horse Road. The hotel blends preserved Tibetan architecture with warm interiors, offering wooden rooms adorned with artisanal rugs. Enjoy an authentic cultural experience amid cobbled courtyards, local flavors, and views of the Songzanlin Monastery.



Ringha Valley : Liotard Farm Camp

Experience authentic life on the Tibetan plateau at this fixed camp in nature. Situated on a traditional farm, it offers rustic and cozy accommodations (furnished tents) in the heart of the meadows, with breathtaking mountain views. Unique rural experiences include caring for yaks, tasting local products, and evening gatherings by the fire.



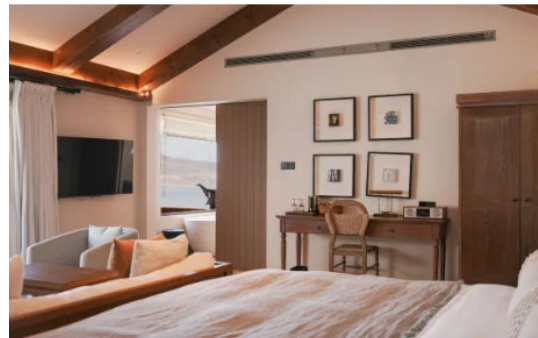
Lijiang : Lux Lijiang

Located in the heart of Lijiang Old Town (UNESCO), this boutique hotel embodies the spirit of the ancient Tea Horse Road. It combines preserved Naxi architecture with contemporary design, featuring quiet courtyards, rooms with exposed beams, and a spa inspired by local traditions. A unique cultural and sensory immersion.



Lashihai : Lux Lashihai

Ideally situated just across from Lashi Lake, this hotel offers full tranquility of the landscape while enjoying a coffee or cocktail.



Your Adventure in China with

3 days possible extension: Yubeng Region hike (rates available on demand)

Day A: Cizhong - Xidang - Yubeng (B). Altitude: 3200m.



Drive to the Tibetan village of Xidang (2500m), following the Mekong Valley. Start of the hike, first up to Namzong La Pass at 3.600m, then down to Yubeng village (3200m), located at the foot of the mountain. Dinner included and overnight at the family hostel. About 2 hours drive and 6 hours walk today.

Day B: Yubeng (B)



4 to 5 hours of hiking today to reach a sacred waterfall for the Tibetans. Whoever bathes there will be blessed by Buddha... Return to the same hostel.

Day C: Yubeng (B)



5h to 6h walk to the Kawagebo Glacier Base Camp, with an extension to the lake at the foot of the glaciers (an additional 1 to 2h). Return to Yubeng. Dinner and overnight in your local Tibetan cottage.

Day D : Yubeng - Ninong - Meili (B). Altitude: 3300m.



5 to 7 hours hike to the village of Ninong, following the Yubeng River, to the junction with the Mekong River, along impressive gorges. Road towards Mingyong village. Discover the Mingyong Glacier using a local shuttle to get there. Continuation to Feilai Si village. Accommodation at the superb Meili Lodge hotel offering a magnificent view of the Meili mountain range. Meals at your expense. Overnight at Meili Songtsam Lodge



Our double location in China and France ensures you control of your trip from A to Z, without intermediary and therefore at the best possible cost! We offer you the strong field knowledge and responsiveness of our local agency, as well as the guarantees and ease of payment offered by our French agency, allowing you to travel in peace!

Our field presence in China

- Incoming local agency located in Kunming, China, since 2007
- 1 unique interlocutor during all phases of travel creation, until your return from China
- Direct booking of all our services across China
- Relationships of trust and respect with our various partners throughout China
- Search for continuous improvement and the creation of itineraries that are ever more surprising and authentic
- Availability and responsiveness on site, reachable number 24/7
- Experienced English-speaking local guides selected for their skills
- 11 expert advisors, regularly traveling in search of destinations that are still authentic
- Knowledge of the "field" allowing us to offer you adapted, exclusive and original circuits

Our agency in China

China Roads 1326 South Ring Road, Kunming, Yunnan, China. License: L-YN-00070

Phone: (0086) 159-49379-177

Website: www.China-Roads.fr & www.Yunnan-Roads.fr & www.Tibet-Roads.fr

The guarantees and advantages of our agency in France

- Payment of your trip to France by simple transfer or credit card (Visa, Mastercard and AMEX) via our secure site, avoiding expensive bank transfer fees to China or the usual charges of 4-5% of the price of the trip for a credit card payment in China
- Registration of our agency with Atout France guaranteeing our professionalism
- HISCOX Professional liability insurance
- IATA certification allowing you to benefit from the management of your international flights at negotiated rates
- Financial guarantee subscribed to the APST guaranteeing you a full refund of the sums already paid in case of failures on our part, otherwise the support of your trip under the same conditions as established with our agency

Our agencies in France (Dinan, Nice, Marseille)

VOYAGEOS, 19 rue Chateaubriand 22100 Dinan FRANCE

Telephones: +33 (0)9-83-07-44-60 or +33 (0)6-40-27-64-22 / weekdays 9-12h and 14-19h.

VOYAGEOS, 06310 Beaulieu-sur-Mer FRANCE (by appointment only)

Phone: +33(0) 7-87-67-02-27 / weekdays of 9-17h.

VOYAGEOS, Marseille FRANCE (by appointment only)

Phone: +33(0) 7-77-45-18-50 / weekdays of 9-17h.

Associative engagement

€2 per traveler donated to 2 charities:

- Colors of China: Sponsorship for the schooling of girls in northern Guangxi
- Children of the Mekong: Schooling of children in Upper Yunnan

+ **planting a tree per traveler** with the Yves Rocher Foundation "Plantons pour la Planète"

"Homemade" tours - authentic traveler feedbacks

Our circuits, and more generally all the content we create and publish, are the result of extensive research and experience of more than 15 years. But they are regularly - not to say constantly - copied. Don't be surprised, but just recognize the copy of the original!

We do not post fake traveler reviews as this has unfortunately become common on the Internet. All comments on the forums and our sites are guaranteed authentic! Several testimonials from alumni of our travelers here: [Travel comments from China](http://Travel.comments.from.China)

Your Adventure in China with

RATES - based on 2/ 4 or 6 travelers in 1-2-3 rooms:

INCLUSIONS and exclusions:

Traditions, craftsmanship and winery in Northern Yunnan (Luxury edition)

- Two people : RMB34200 (EUR4275) per person
- Four people : RMB28600 (EUR3575) per person
- Six people : RMB28600 (EUR3575) per person

Applied exchange rate : €1 = RMB 8

- Deposit on reservation of 50% of travel expenses, by transfer or credit card in France

- Balance 3 weeks before departure, again by bank transfer or credit card in France

This rate includes:

- Accommodation in the mentioned hotels with breakfast (except when noted)
- All transfers by private vehicle as mentioned in the program
- English-speaking driver-guide (or driver + English-speaking guide if 6 participants) from Day 1 to Day 14.
- Entrance fees for sites and artisan activities included: tea picking, batik fabric making, wood carving, black clay pottery, and thangka painting.
- High-speed train Kunming – Weishan in business class.
- Dynamic Yunnan show in Kunming (we recommend it!)
- 24/7 assistance from our agency in Kunming, insurance and guarantees from our French agency

This rate does not include:

- Meals and drinks
- Tickets for visits mentioned in the program
- Personal expenses and activities not explicitly mentioned in the program
- Personal travel insurance and Chinese visa fees
- Flight to Kunming and from Lijiang.

Program proposed by Antoine Herblot for the attention of _____ dated _____ ,
subject to slight change due to schedule changes or cancelation of airlines, availability of guides and
hotels or bad weather.



In China : Yunnan roads, 219 Chuncheng Road, Kunming, Yunnan, China

In France : Voyageos, 19 rue Chateaubriand 22100 Dinan



www.china-roads.fr