

Southwest trilogy : Sichuan, Tibet & Yunnan

Classical Sichuan, Tibet to Everest Base Camp and South Yunnan Tour

28 days

Chengdu – Huanglong – Jiuzhaigou – Dujiangyan – Leshan – Emeishan – Lhasa – Gyantse – Shigatse –
Everest Base Camp – Kunming – Luoxiagou – Puzhehei – Xishuangbanna – Jingmaishan – Pu'er – Yuanyang
– Jianshui – Tonghai – Kunming



Days	Places to visit	Accommodation
Day 1	Arrival in Chengdu	Holiday Inn Express Tianfu Square
Day 2	Chengdu - Huanglong	Qianhe Rezen Hotel
Day 3	Jiuzhaigou – Chengdu	Holiday Inn Express Tianfu Square
Day 4	Chengdu - Dujiangyan – Emei	Emei Mount Hot Spring Hotel
Day 5	Emeishan	Emei Mount Hot Spring Hotel
Day 6	Emeishan – Leshan – Chengdu	Holiday Inn Express Tianfu Square
Day 7	Chengdu City Tour	Holiday Inn Express Tianfu Square
Day 8	Chengdu – flight to Lhasa	Thangka Hotel
Day 9	Lhasa	Thangka Hotel
Day 10	Lhasa – Gyantse	Yutuo Hotel
Day 11	Gyantse – Shigatse	Gesar Hotel
Day 12	Shigatse – Everest Base Camp	Zhufeng Wuji Hotel
Day 13	Everest Base Camp de base – Shigatse	Gesar Hotel
Day 14	Shigatse - Lhasa – flight to Kunming	Grand Park
Day 15	Kunming – Dongchuan	Luoxiaju
Day 16	Dongchuan – Kunming - Puzhehei	U House
Day 17	Puzhehei	U House
Day 18	Puzhehei – Bamei - train to Jinghong	Mekong River Jingland Hotel
Day 19	Jinghong City tour	Mekong River Jingland Hotel
Day 20	Jinghong – Menghai – Jingmaishan	Yunqi Xiaozhu guest house
Day 21	Jingmaishan	Yunqi Xiaozhu guest house
Day 22	Jingmaishan – Pu'er	Jiangshanlong
Day 23	Pu'er	Jiangshanlong
Day 24	Pu'er – Yuanyang	12 Manor terraces
Day 25	Yuanyang	12 Manor terraces
Day 26	Yuanyang – Jianshui	Hanlinyuan
Day 27	Jianshui – Tonghai – Kunming	Grand Park
Day 28	Departure from Kunming	

Day 1: Arrival in Chengdu – Transfer to the hotel

Upon arrival at Chengdu Airport, your driver and guide will be waiting for you with a sign bearing your name and will transfer you to the Holiday Inn Express Chengdu Tianfu Square, where you can check in and rest for a while.

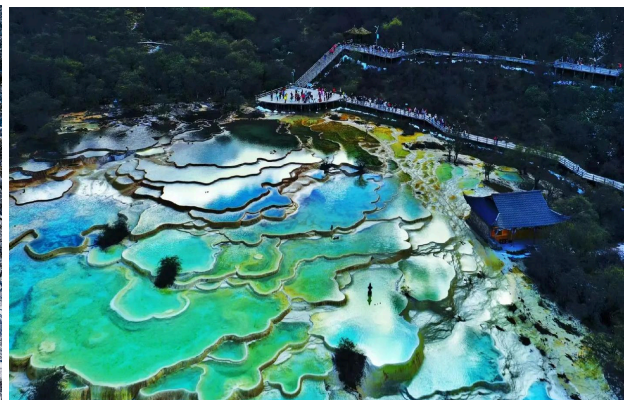
Overnight at Holiday Inn Express Chengdu Tianfu Square.



Day 2: Chengdu – Huanglong – Jiuzhaigou (B) ~ 5h transfer (train + car) Altitude: 3250m

Departure from Chengdu East Railway Station by high-speed train to Huanglong Jiuzhai Station. Upon arrival, a short break before visiting the scenic and historical site of Huanglong. Huanglong is the only well-preserved high-altitude wetland area in China. It is famous for its vast expanse, complex karst formations, and colorful travertine landscapes. This exceptional site is a UNESCO Natural World Heritage Site, rated AAAAA (the highest tourism rating in China), and recognized as a major national scenic area. It is nicknamed the "Wonder of the World" and "Paradise on Earth" for its fairy-tale beauty reminiscent of celestial jade pools. After the visit, direct transfer by car to Jiuzhaigou. Hotel check-in upon arrival.

Overnight at Jiuzhai Qianhe Rezen Hotel.



Day 3: Visit of Jiuzhaigou – Return to Chengdu by high-speed train – Dujiangyan (B) ~ 4h transfer (train + car) Altitude: 1200m

After breakfast, depart by private car to Jiuzhaigou Valley. Enter the scenic area in the morning and explore until the afternoon. Jiuzhaigou is a spectacular natural site, ideal for photography and nature observation. The main areas include Shuzheng Valley, Rize Valley – notably with Five Flower Lake – and Zechawa Valley. The visit takes about 6 to 8 hours. After the visit, transfer to Huanglong Jiuzhai Railway Station and take the evening high-speed train back to Chengdu, followed by a transfer to Dujiangyan. Hotel check-in upon arrival.

Overnight at Holiday Inn Express Dujiangyan Ancient City.



Day 4: Dujiangyan Panda Park – Irrigation System – Emei (B) ~ 4h transfer Altitude: 3250m

Departure from your hotel this morning to visit the Panda Park and meet this iconic animal. Enjoy watching them eat bamboo or play together. In the afternoon, discover the Dujiangyan Irrigation System. Built over 2,000 years ago, it still plays a vital role in irrigating local farmlands today. Walk through the site to observe its ingenious design, including the fish-mouth-shaped dam, the Feisha spillway, and the Baopingkou opening. Learn how water from the Minjiang River is diverted to surrounding fields. Also enjoy the river landscape and fresh air. After the visit, drive to the Emei region.

Overnight at Emei Mountain Hot Spring Hotel Lingxiu Hot Spring.



Day 5: Visit of Mount Emei – Overnight in Emei (B) ~ 20 min transfer Altitude: 3000m

After breakfast, departure for a visit to Mount Emei. Explore the Golden Summit and its various statues. You may encounter the region's playful monkeys. This is an ideal day for a peaceful hike (about 3 to 4 hours of walking, mostly flat terrain).

Overnight at Emei Mountain Hot Spring Hotel Lingxiu Hot Spring.



Day 6: Emei – Leshan – Suji – Return to Chengdu (B) ~ 4h transfer Altitude: 500M



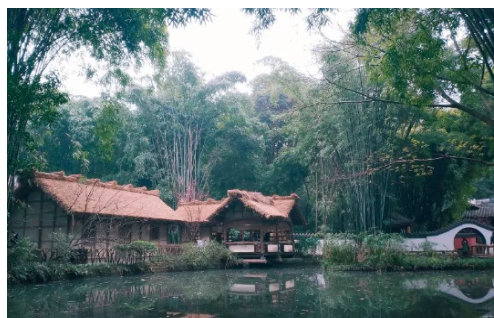
After breakfast, drive to Leshan to visit the Giant Buddha. Located 150 km from Chengdu, this gigantic Maitreya Buddha was carved into the cliff in the 8th century. Also discover Suji, an old district of Leshan with traditional buildings dating from the Cultural Revolution, and possibly enjoy tasting local specialties. Return to Chengdu in the afternoon.

Overnight at Holiday Inn Express Chengdu Tianfu Square.

Day 7: Wuhou Temple – Wenshu Monastery – Du Fu Thatched Cottage – People's Park – Sichuan Opera (B) ~ 1h transfer Altitude: 500m

After breakfast, visit Wuhou Temple, dedicated to the history of the Three Kingdoms and the heroes of the Shu Kingdom. Then, explore Wenshu Monastery, a spiritual Buddhist temple nestled in the heart of the city. Admire the refined architecture, feel the serenity of the place, and stroll along its peaceful paths. Continue to Du Fu's Thatched Cottage, the former residence of the great Tang Dynasty poet. This museum, built on the poet's original dwelling, is a major cultural site. Visit the Hall of Poetry History, the Ministry of Works Shrine, and other pavilions. The museum houses over 30,000 documents and 2,000 objects related to Du Fu. Finally, take a walk in People's Park and discover local tea culture.

Overnight at Holiday Inn Express Chengdu Tianfu Square.



Day 8: Chengdu – Lhasa (B) ~ 1h30 transfer Altitude: 3650m.

Flight 3U8697 from Chengdu (Shuangliu) to Lhasa: departure at 08:30, arrival at 11:05. Upon arrival, meet your driver and English-speaking guide, then transfer to the Thangka hotel. Rest of the day for acclimatization to the altitude; your English-speaking guide remains available for walking visits from the hotel. Meals at your expense.

Overnight at Thangka Hotel.



Day 9: Lhasa (B) ~ 1h transfer. Alt.: 3650m.



Visit of Jokhang Monastery and a walk around the monastery with other pilgrims along the Barkhor path (may be visited the day before depending on arrival time). Discovery of the Potala Palace. Lunch. In the afternoon, visit of Sera Monastery. Although it was heavily damaged during the Chinese invasion of Tibet and the Cultural Revolution, it has been restored and has retained its function as a monastic university. Today, it still hosts a large number of monks and pilgrims.

Overnight at Thangka Hotel.

Day 10: Lhasa – Gyantse (B) ~ 5h drive Altitude: 3950m.



Morning departure for Gyantse via the stunning Yamdrok Lake, one of Tibet's sacred lakes. Pass through the Karo Pass (5000m). Scenic view of a beautiful glacier along the way. Arrival in Gyantse, climb to the Dzong. This is where the decisive battle took place during the British invasion in 1904. The Gyantse fortress offers a magnificent view over the valley and the entire town of Gyantse.

Overnight at Yutuo Hotel.

Day 11: Gyantse – Shigatse (B) ~ 2h drive Altitude: 3800m.

Morning visit of Pelkor Monastery and the old town of Gyantse. Then drive to Shigatse. En route, visit the lovely village of Shalu and its monastery. Shalu Monastery dates back to the 11th century, and its renovation began in the 15th century thanks to financial support from the Mongol Empire. The architectural style of Shalu Monastery is very different from all other monasteries in Tibet due to its Chinese-style roof made of glazed green and yellow tiles. In the afternoon, discover Tashilhunpo Monastery: residence of successive Panchen Lamas, built by the 1st Dalai Lama in the 15th century. It houses the largest bronze statue in the world, built in 1904 to represent the future Buddha Maitreya.

Overnight at Shigatse Gesar Hotel.



Day 12: Shigatse – Tashizong (B) ~ 6h drive Altitude: 4200m.

Visit the Shigatse market, followed by a kora (ritual circuit) with pilgrims around Tashilhunpo Monastery. Then drive toward the Everest region.

Overnight at Zhufeng Wuji Hotel.

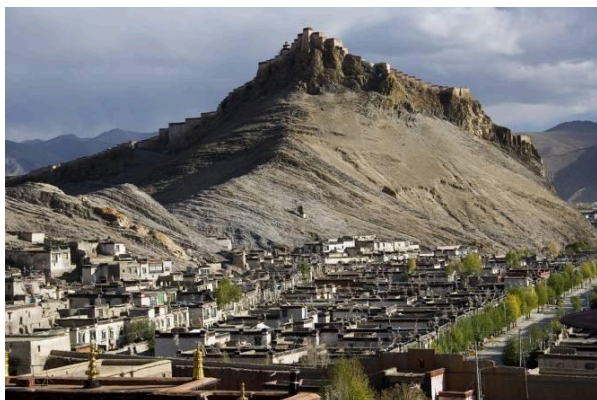
Day 13: Tashizong – Everest – Sakya – Shigatse (B) ~ 7h drive Altitude: 3800m.

Early morning departure for the Everest Base Camp and Rongbuk Monastery via a spectacular road, known as one of the highest in the world (average altitude of 5000 meters with passes over 5200 meters). Visit the “highest temple in the world,” which offers an exceptional view of Mount Everest (specifically the north face, visible only from Tibet). The structure is modest and contrasts with previously visited monastic cities but is remarkable for its charm and authenticity. Return to Shigatse with a stop to visit Sakya. Its monastery, founded in 1073, is the seat of one of the four major schools of Tibetan Buddhism, the Sakyapa school. The monastery’s medieval Mongol architecture differs from the temples of Lhasa.

Overnight at Shigatse Gesar Hotel.



Day 14: Shigatse – Lhasa – Kunming (B) ~ 3h30 drive Altitude: 3700m.



This morning, drive to Lhasa along the Brahmaputra River. During the journey, you'll be able to observe this great river that flows through Tibet, India, and Bangladesh. Transfer to the airport for flight MU9738, departing at 16:20 and arriving in Kunming at 19:05. Upon arrival, meet and transfer to your hotel conveniently located near the Green Lake.

Overnight at Grand Park Hotel.

Day 15: Kunming - Luoxiangou (B) ~ 3h30 transfer. Altitude: 1800m.

Meet your driver and English-speaking driver-guide at 9am. Morning drive to Dongchuan, then to the "Red lands" region of Lexiaguo. First walk this afternoon through the different sites of the region. Meals at your expense.

Overnight at the charming Luoxiaju 3* hotel.



Day 16: Luoxiangou – Kunming - Puzhehei (B) ~ 3h30 transfer. Altitude: 1800m.

Morning of discovery of the terraced landscapes of the region, especially near the villages Huashitou, Lexiaguo and Damakan. In the afternoon, return to Kunming and transfer to the railway station for the high-speed train to Puzhehei, train D3962 departing at 17:35 and arriving at 19:10. Transfer to your hotel and check-in.

Overnight at U House Lake View Boutique Inn.

Day 17: Puzhehei (B) ~ 1h30 transfer. Altitude: 1450m.

Puzhehei is nicknamed the "little Guilin" of Yunnan, take a boat to stroll along rice fields and lakes in the region, and enjoy the beautiful landscapes of karst hills. Passage along several small villages. At the end of the circuit, possible visit of small caves, and climb the Qing long hill for two superb views of the surroundings.

Overnight at U House Lake View Boutique Inn.



Day 18: Bamei – Guangnan – Kunming – Jinghong (B) ~ 1h30 transfer Altitude: 1450m.

Departure around 8:00am towards Bamei, a two-hour drive through green hills and Zhuang and Miao villages. Around 10:00am, access by a navigable cave via boat (approx. 20 minutes) to the village of Bamei, isolated from the modern world and accessible only by water. Discovery of this traditional rural village, surrounded by rice fields and untouched by modern development. Spontaneous encounters with locals and immersion into traditional daily life. Lunch at your expense at a local guesthouse. Return to the entrance of Bamei via the same cave, and continue by road to Guangnan station (approx. 1H30). High-speed train D3831 to Kunming South, departing at 16:54 and arriving at 18:32 (first-class seats), then train C365 to Xishuangbanna (19:05–22:59, also first-class seats). Transfer to your hotel, well located in Jinghong.

Overnight at Jing land Hotel.



Day 19: Jinghong city tour

Meet your driver and guide at 9:00am at your hotel and drive to the **Valley of Wild elephants** that you can visit throughout the morning. Lunch at your expense and transfer this afternoon to **Manting Park** and its botanical garden where you can take time to discover the local tropical plants at your own pace. In the evening, watch Mengbalanaxi show to soak up the vibrant colors and sounds of Dai culture.

Overnight at Jing land Hotel.



Day 20: Jinghong – Menghai – Manzhao – Jingmai Mountain (B) ~ 4h drive

Departure at 9:00am from your hotel. Visit the Sunday market in Menghai and meet various ethnic minorities. Continue to the village of Manzhao, known for its traditional handmade paper production. Lunch at your expense, then journey to Jingmai Mountain, famous for its ancient tea forest. Walk through the forest of old tea trees, then settle in the small village of Mengjing at a wooden guesthouse run by one of the main tea-growing families. Dinner at your expense.

Overnight at Yunqi Xiaozhu Guest House.

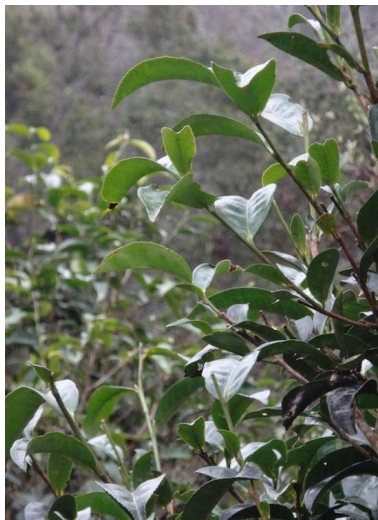


Note : Tea picking takes place every year from march to may and from september to november. It is possible to participate in the picking with the Bulang inhabitants, and to learn more about the processes of making the famous Pu'er tea.

Day 21: Jingmai – Nuogang – Lahu Village (B) ~ 2h drive

Guided morning visit to the traditional Aini village of Nuogang and encounter with local residents. Also visit the village pagoda of Jingmai. Lunch at your expense, then continue to a fertile valley and visit the traditional Lahu village of Laodabao. The Lahu people are renowned for their traditional music and dance. Long walk through the village, visit of local homes and friendly encounters with villagers. Possibility to organize a small community-run show of songs and dances (with proceeds going directly to the local community). Return to Jingmai Mountain in the late afternoon. Dinner at your expense.

Overnight at Yunqi Xiaozhu Guest House.

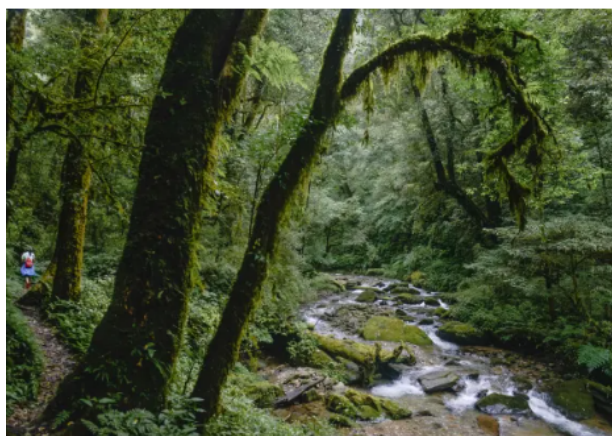


Day 22: Lancang – Pu'er (B) ~ 3h drive

Meet at your hotel at 8:30am and depart toward Pu'er, with a stop en route at the local district Museum. Continue the road to the Pu'er region. In the afternoon, visit Wild Duck Pond Coffee Estate, meet the locals, walk through the coffee plantations, and enjoy a tasting. Scenic road with numerous viewpoints. Dinner at your expense on the way.

Overnight at Jiangshanlong Inn.

Hotel alternative suggestion: Red Panda Manor, this hotel is known for the possibility to interact freely with red pandas (extra fee: RMB800/person/night)



Day 23: Pu'er – Dadugang – Nakeli – Pu'er (B) 2h transfer



Morning transfer to Dadugang Tea Plantation for a tea-making workshop. Lunch at your expense then afternoon visit to the small traditional village of Nakeli, once a key stop on the Ancient Tea and Horse Road. Walk through the wooden houses, the big mill and the round path, meet the friendly inhabitants and stroll along the small river, in an atmosphere of yesteryear. Dinner at your expense in downtown Pu'er on the way back to your hotel.

Overnight at Jiangshanlong Inn.

Day 24: Pu'er – Yuanyang (B) ~ 6h drive

Departure at 8:00am from your hotel for a long drive toward Yuanyang via the southern highway. Midway stop in Mojiang, visit of the Tropic of Cancer Park and lunch at your expense. Continue to Yuanyang, arriving late afternoon. First panoramic views of the famous terraced rice fields at sunset. Check-in at 12 Manor Terraces, located directly opposite the rice terraces. Dinner at your expense.

Overnight at 12 Manor Terraces.



Day 25: Yuanyang (B, L) ~ 2h drive. Altitude: 1800m.

Morning departure to a nearby village to attend the local market (based on the Chinese lunar calendar). Meeting with different minorities, including Yi, Hani and Dai. Continuation to a small village where a show of songs and dances was set up by the villagers belonging to the Yi minority. Charming and touching... Note that the income from the show will be donated directly to families. Lunch will then be served at one of the families who participated in the show. In the afternoon, 2h to 3h hike through beautiful landscapes of rice terraces, and small villages. Dinner at your expense.

Overnight at 12 Manor Terraces.



Note : Yuanyang rice fields are filled with water from mid-December to late February every year. From the beginning of March, the land is prepared for plantations that will last the entire month of April. Rice begins to grow in May. From June, the rice fields turn green, then yellow for the months of July to September. The harvests last all October, then the rice fields are cleaned and then put back in water in November / early December. If you are interested, it is possible for us to organize, with local farmers, a planting activity (April) or rice harvesting (October), over half a day or a full day.

Day 26: Yuanyang - Jianshui (B) ~ 3h drive Altitude: 1500m.

Morning hands-on farming activity in the rice fields with locals. Then drive to the town of Jianshui. Upon arrival, visit the Chaoyang Gate, which houses a beautiful permanent exhibition of old photographs depicting street scenes from late 19th/early 20th century Yunnan, taken by Auguste François, ethnographer, photographer, and former French Consul in Yunnan. Short transfer then to the South gate of the city and free stroll through the alleys, to discover the famous well and its tofu factory, the local specialty. Short transfer then to the temple of Confucius, which is the second largest in China after Qufu, the hometown of the master. The ensemble consists of a large park with pond, several courtyards, superb porticos, temples and pavilions. Check-in at Hanlinyuan Boutique Hotel, and possible visit of the residence of the Zhu family, one of the best preserved in Yunnan, formed by a set of courtyards, pavilions and gardens. Lunch and dinner at your expense.

Overnight at Hanlinyuan.



Day 27: Jianshui - Tonghai – Kunming (B) ~ 2h30 drive

Morning departure to Kunming with a first stop at the traditional Tuanshan village, home to the Zhang family residence and many well-preserved buildings. Lunch at your expense in the small village. Also discover the Double Dragon Bridge and a small French colonial train station in the countryside. Continue toward Kunming with a stop at Xiushan Mountain in Tonghai, and possibly the Liuyi village, where you may still find elderly women with bound feet. Arrival in late afternoon and check-in at your hotel. Dinner at your expense. In the evening, watch the beautiful Yunnan minority dance and song show entitled "Dynamic Yunnan" (8pm-9:30pm / no shows on sundays)

Overnight at Grand Park Hotel.

Day 28: Departure from Kunming (B) ~ 1h transfer

Free start of the day without a guide or driver, before transfer to Kunming Airport for the flight to your next destination. End of our services, we wish you a pleasant return home, beautiful memories in mind!

Our selection of hotels for your tour in Sichuan - Tibet and Yunnan:

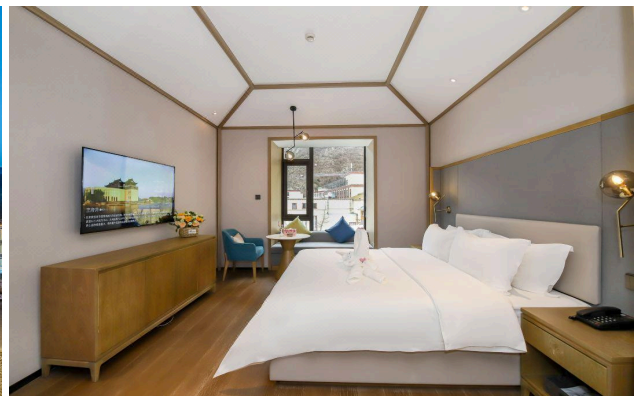
Chengdu: Holiday Inn Express Chengdu Tianfu Square

Close to Kuanzhai Street, Wuhou Temple and Chunxi Street, this establishment offers the best comfort at the best price/quality ratio.



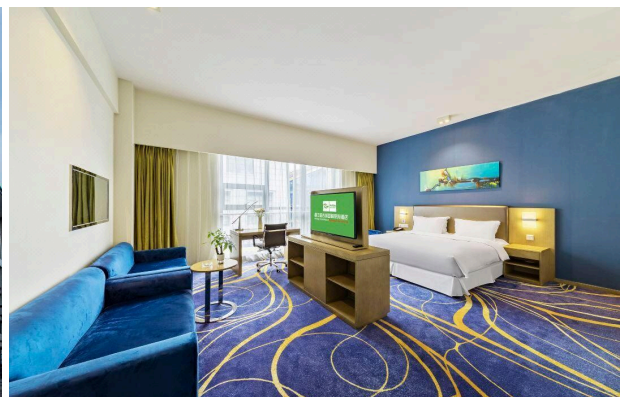
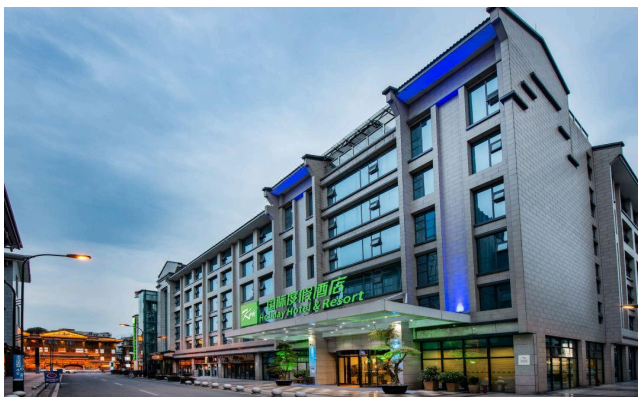
Jiuzhaigou: Jiuzhai Qianhe Rezen Hotel

Among the newest hotels in Jiuzhaigou, this property was renovated in 2022 and enjoys a very convenient location close to all the main attractions in the area.



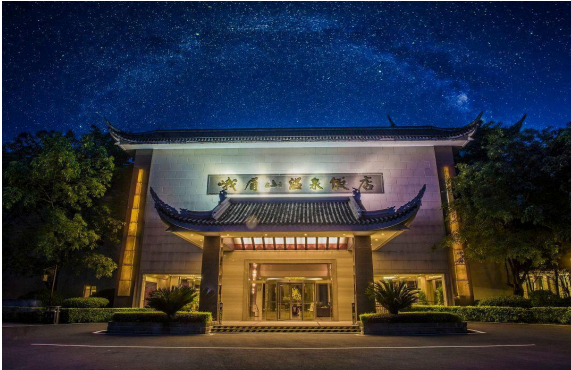
Dujiangyan: Holiday Inn Express Dujiangyan Ancient City

Ideally located near the ancient town, this hotel offers the reliable service and infrastructure guaranteed by the Holiday Inn brand. The on-site restaurant is open all day without interruption.



Emei: Emei Mountain Hot Spring Hotel Lingxiu hot spring

Set within the scenic Baoguo Temple area, on nearly 5 hectares of land, this hotel features both Chinese and Western restaurants, as well as a wide range of leisure facilities including KTV, bar, sauna, billiards, gym, and an outdoor tea lounge with stunning mountain views.



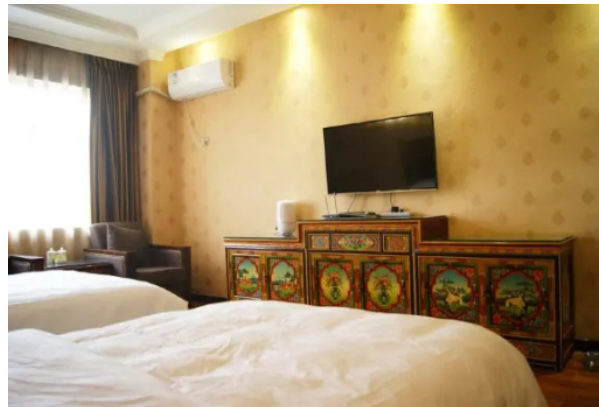
Lhasa: Thangka Hotel

Tangka Hotel (Tangka Jiudian) is next to Jokhang Temple Square, close to Jokhang Temple. The interior decoration of the hotel features in Tibetan style. This hotel offers single rooms, standard rooms and suites. Each is equipped with Internet access. The hotel's restaurant serves Chinese and Western cuisines with Tibetan cuisine as its specialty.



Gyantse: Yutuo Hotel

pleasant stay in Gyantse for those traveling for business or leisure. This hotel is located near many of Gyantse's attractions including Jiangzi Zongshan Castle, Gyantse Ancient City and Jiangzi Shanghai Park. When guests have some time on their hands they can make use of the onsite facilities. If you demand a high level of service, our guests have indicated that this hotel has excellent standards.



Shigatse: Gesar Hotel

The Gesar Hotel provides a great place for travelers to relax after a busy day. The Gesar Hotel is an ideal choice for travelers who want to take in the sights and sounds of Shigatse. With multiple attractions nearby including Xigaze Cultural Center, Darewa Park and Shigatse Shanghai Science and Technology Museum, guests will find plenty to keep themselves occupied. This hotel makes a great place to kick back and relax after a long day of sightseeing.



Tashizong: Zhufeng Wuji Hotel

Opened in 2021, the Wuji Hotel offers travelers a pleasant stay in Tingri, whether for business or leisure purposes. When guests have some time on their hands they can make use of the onsite facilities. This Tingri hotel features parking on site. Our guests consider this hotel to have excellent service.



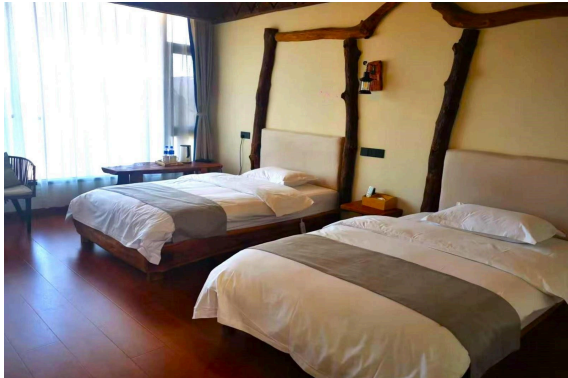
Kunming: Grand Park Hotel 5*

Well located hotel in the center of the city in the Emerald Lake district. This is not a boutique hotel (there is none in Kunming) but a great value hotel with a good comfort to start and end your stay at Yunnan in the best way possible. with easy self-organized tours, free walking distance from the hotel.



Lexiaguo: Luoxiaju 3*

A recent find, this hotel offers by far the best value for money in the heart of the Red Earth region. The terrace boasts sweeping views over the colorful landscapes. A simple breakfast (noodle soup) is served.



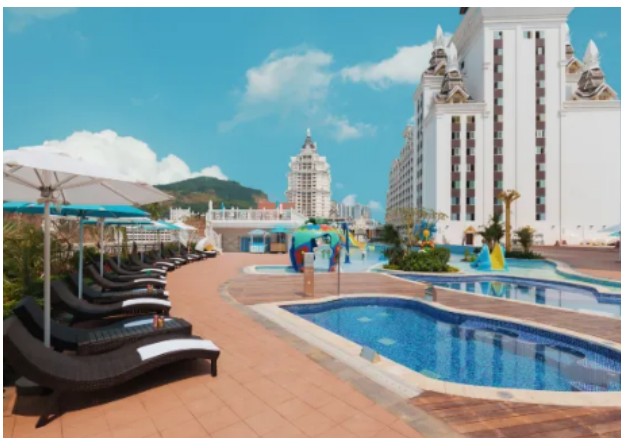
Puzhehei: U House Lake View Boutique Inn 4*

Opened in 2019, this charming boutique hotel is ideally located by a lotus-lined river, perfect for scenic strolls. With just 11 rooms, it's close to the old town's quaint alleys and a wide range of dining options. From here, it's easy to escape the touristy center and wander into the surrounding countryside dotted with ponds and karst hills.



Jinghong: Mekong River JingLand Hotel

Located in Xishuangbanna — known as the "land of peacocks" — this hotel is a stone's throw from the night market and the Mengbalanaxi dance show. It offers aquatic leisure facilities and a well-regarded buffet restaurant.



Jingmaishan: Yunqi Xiaozhu guest house

Located at the bottom of the Mangjing region, all rooms have stunning views of an ocean of clouds with floor-to-ceiling windows. The perfect address to feel at home on the other side of the world.



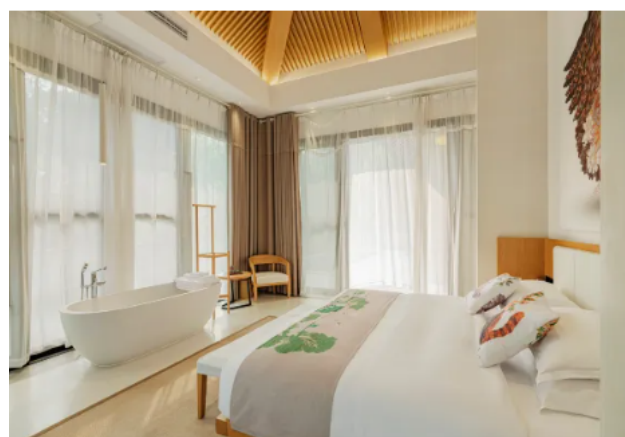
Pu'er: Jiangshanlong Inn

Newly opened in Pu'er, well located near Lake Xima Park, hotel opened by a tea trading company and decorated with many antique artifacts recovered in the areas, the hostel gives the impression of going back 50 years, at the time when tea and horses were still the main activity in the region. The establishment is totally dedicated to tea culture and equipped with all modern amenities; you can discover the many varieties of teas of Yunnan.



Alternative : Pu'er : Red Panda Manor

Well-located near Pu'er in a quiet mountain setting, this establishment stands out for the fact that you can freely interact with the red pandas that also inhabit the surrounding forest.



Yuanyang: Twelve Manor terraces

Conveniently located between Jingkou and Bada, this newly opened boutique hotel offers rooms with panoramic views of the rice fields and other services such as local tea tasting, traditional barbecue and outdoor baths with local medicinal plants. the best charming address in the area.



Jianshui: Hanlinyuan Boutique Hotel

Conveniently located in the heart of Jianshui, and decorated with refinement, you will have easy access to all the points of interest of the city within a 30-minute walk from your hotel. Chinese breakfast.





Our double location in China and France ensures you control of your trip from A to Z, without intermediary and therefore at the best possible cost! We offer you the strong field knowledge and responsiveness of our local agency, as well as the guarantees and ease of payment offered by our French agency, allowing you to travel in peace!

Our field presence in China

- Incoming local agency located in Kunming, China, since 2007
- 1 unique interlocutor during all phases of travel creation, until your return from China
- Direct booking of all our services across China
- Relationships of trust and respect with our various partners throughout China
- Search for continuous improvement and the creation of itineraries that are ever more surprising and authentic
- Availability and responsiveness on site, reachable number 24/7
- Experienced English-speaking local guides selected for their skills
- 11 expert advisors, regularly traveling in search of destinations that are still authentic
- Knowledge of the "field" allowing us to offer you adapted, exclusive and original circuits

Our agency in China

China Roads 1326 South Ring Road, Kunming, Yunnan, China. License: L-YN-00070

Phone: (0086) 159-49379-177

Website: www.China-Roads.fr & www.Yunnan-Roads.fr & www.Tibet-Roads.fr

The guarantees and advantages of our agency in France

- Payment of your trip to France by simple transfer or credit card (Visa, Mastercard and AMEX) via our secure site, avoiding expensive bank transfer fees to China or the usual charges of 4-5% of the price of the trip for a credit card payment in China
- Registration of our agency with Atout France guaranteeing our professionalism
- HISCOX Professional liability insurance
- IATA certification allowing you to benefit from the management of your international flights at negotiated rates
- Financial guarantee subscribed to the APST guaranteeing you a full refund of the sums already paid in case of failures on our part, otherwise the support of your trip under the same conditions as established with our agency

Our agencies in France (Dinan, Nice, Marseille)

VOYAGEOS, 19 rue Chateaubriand 22100 Dinan FRANCE

Telephones: +33 (0)9-83-07-44-60 or +33 (0)6-40-27-64-22 / weekdays 9-12h and 14-19h.

VOYAGEOS, 06310 Beaulieu-sur-Mer FRANCE (by appointment only)

Phone: +33(0) 7-87-67-02-27 / weekdays of 9-17h.

VOYAGEOS, Marseille FRANCE (by appointment only)

Phone: +33(0) 7-77-45-18-50 / weekdays of 9-17h.

Associative engagement

€2 per traveler donated to 2 charities:

- Colors of China: Sponsorship for the schooling of girls in northern Guangxi
- Children of the Mekong: Schooling of children in Upper Yunnan

+ **planting a tree per traveler** with the Yves Rocher Foundation "Plantons pour la Planète"

"Homemade" tours - authentic traveler feedbacks

Our circuits, and more generally all the content we create and publish, are the result of extensive research and experience of more than 15 years. But they are regularly - not to say constantly - copied. Don't be surprised, but just recognize the copy of the original!

We do not post fake traveler reviews as this has unfortunately become common on the Internet. All comments on the forums and our sites are guaranteed authentic! Several testimonials from alumni of our travelers here: [Travel comments from China](#)

RATE - based on 2, 4 or 6 travelers in double/twin rooms

Southwest trilogy : Sichuan, Tibet et Yunnan Tour – 28 days :

- 45,600 RMB (approx. €5,846) based on 2 participants
- 30,900 RMB (approx. €3,962) based on 4 participants
- 27,000 RMB (approx. €3,462) based on 6 participants

Optional domestic flight transfers within China: 2600 RMB (329 euros) per person

Applied exchange rate: €1 = ~RMB7.8

- Deposit on reservation of 50% of travel expenses, by transfer or credit card

- Balance 3 weeks before departure, again by bank transfer or credit card

This rate includes:

- Accommodation in the mentioned hotels with breakfast
- All transfers by private vehicle as mentioned in the program
- All railway transfers, first class seats
- Entrance fees and activity costs as per the program
- English-speaking guide throughout the entire journey (except for short transfers)
- Tickets for the Mengbalanaxi show in Jinghong and Dynamic Yunnan in Kunming (both highly recommended!)
- 24/7 assistance from our agency in Kunming, insurance and guarantees from our French agency

This rate does not include:

- Personal expenses and activities not explicitly mentioned in the program
- Lunches and dinners
- Tips for drivers and guides
- Personal travel insurance and Chinese visa fees
- International and domestic flights (we can include them in the final quotation if desired)

Itinerary subject to minor changes due to airline schedule updates, guide or hotel availability, or weather conditions.



In China: Yunnan Roads, 219 Chuncheng Road, Kunming, Yunnan, China

In France : Voyageos, 19 rue Chateaubriand 22100 Dinan

